



Lamp pole (380kgs)

H(6+2)m/0.5m

Wind Mill 300w (P-300)

Mill Diameter: 136cm;

Mill Height: 130cm;

Cut-in Wind Speed: 3m/s

Cut-out Wind Speed: 25m/s

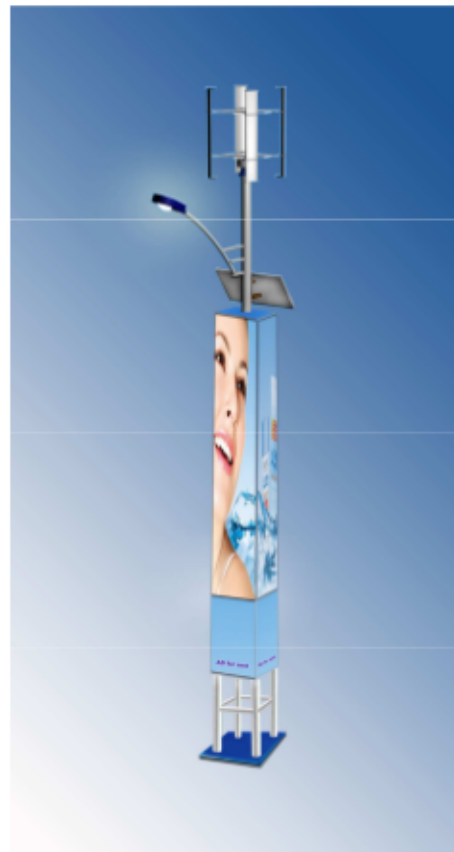
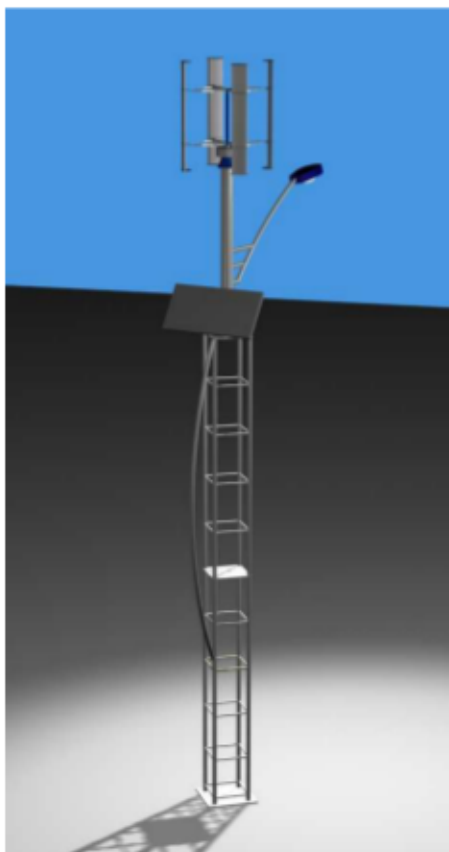
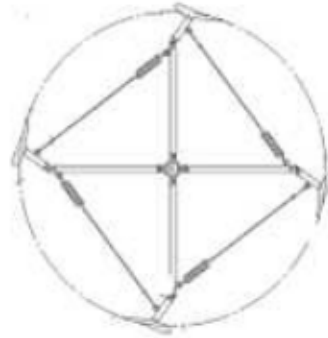
Rated Wind Speed: 10m/s

Survival Wind Speed: 50m/s

System Voltage: DC12/24V

Speed Control System: Pitch Control

Brake Style: Automatic Magnet Brake





Solar Panel

80w/160w (optional)

Open Circuit Voltage: 21.5v/42v

Rated Voltage: 15v/30v

Rated Current: 4.6A

Short Circuit Current: 5A

Size: 1200mm*545mm*40mm/*2

Net Weight: 8kg/16kg



Lamp

LED/Non-polar (optional)

25w/DC12v

50w/DC24v

75w/DC24v

100w/DC24v

Protection Degree: IP65

